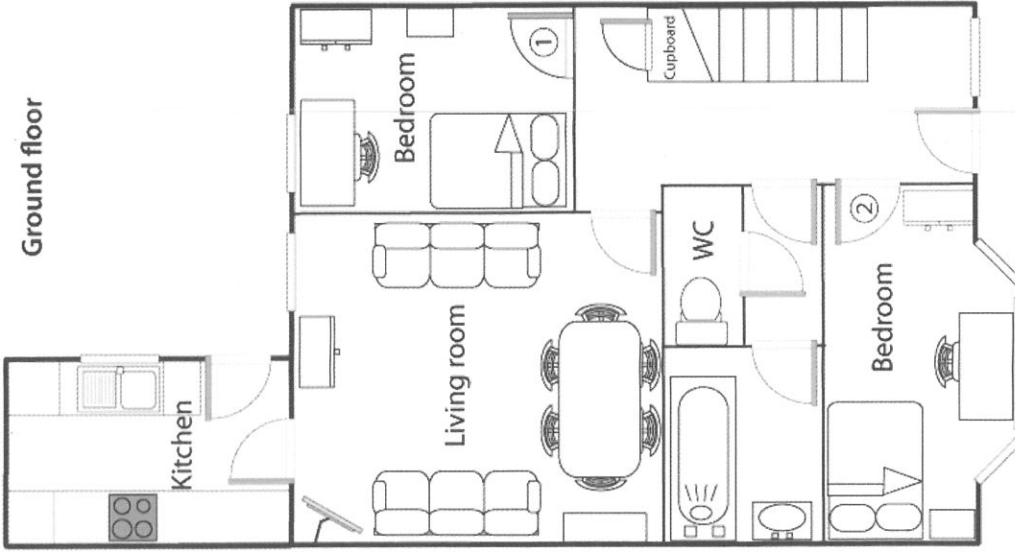
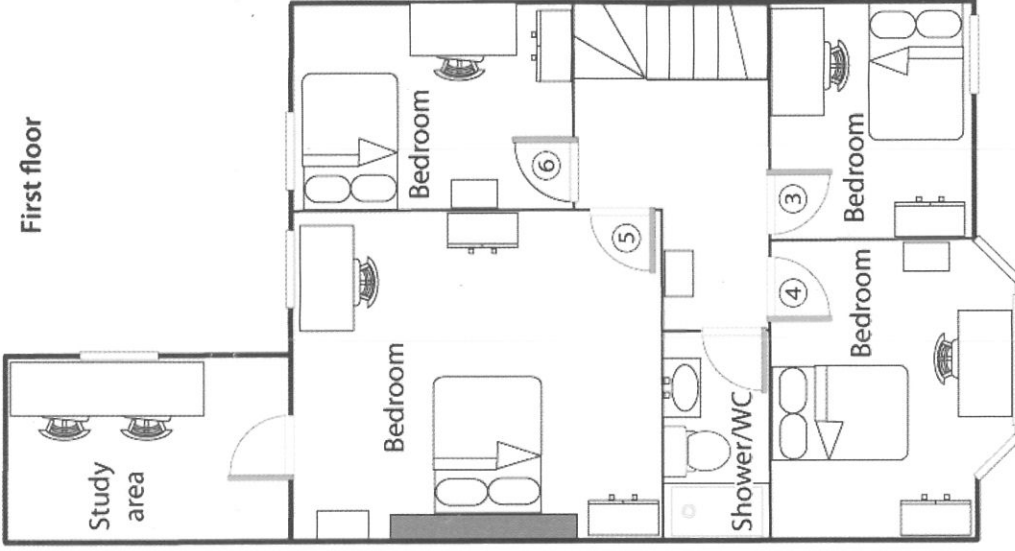


Floorplan



Bedroom sizes (E&OE)

- Bedroom 1 ~ 3.75m x 2.47m (12'4" x 8'1")
- Bedroom 2 ~ 4.37m x 2.19m (14'4" x 7'2")
- Bedroom 3 ~ 2.93m x 2.71m (9'7" x 8'11")



- Bedroom 4 ~ 3.52m x 2.71m (11'7" x 8'11")
- Bedroom 5 ~ 4.91m x 3.87m (16'1" x 12'8")
- Bedroom 6 ~ 3.86m x 2.58m (12'8" x 8'6")

Landlords: Graeme and Rosemary Kirk

1 Briardene, Durham, DH1 4QU • landline: 01913740707 • mobile: 07941131124 • email: gk@senlac.com